

# YOUR FRUIT TREE

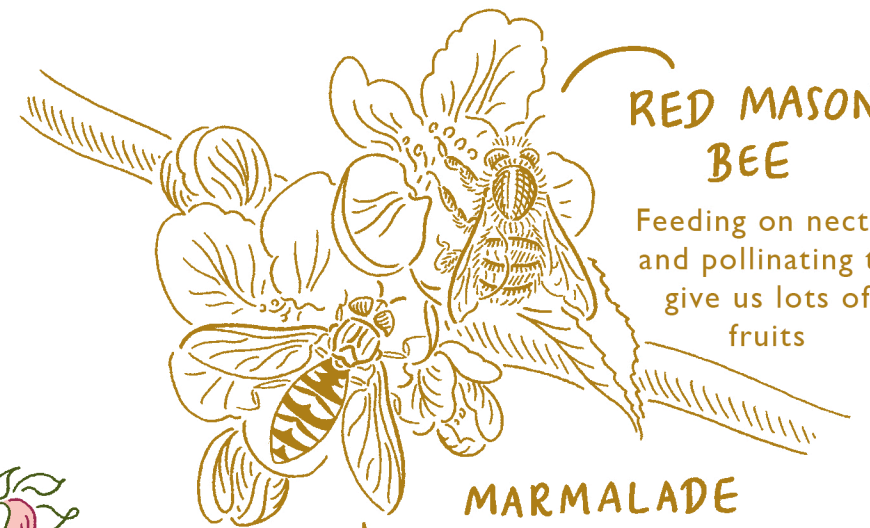
## a home for pollinators



**MISTLETOE MARBLE MOTH**  
 It's larva can be spotted on mistletoe leaves during the winter and then emerges as a moth in the Spring, with wings resembling bird poo!



**NOBLE CHAFER BEETLE**  
 The UK's rarest Beetle snacks on decaying wood



**RED MASON BEE**  
 Feeding on nectar and pollinating to give us lots of fruits

**MARMALADE HOVERFLY**



**COMMON LADYBIRD**  
 Ladybirds take shelter over the winter, sleeping under the bark

**ORANGE TIP BUTTERFLY**  
 Feeding on wildflower nectar



**RED ADMIRAL BUTTERFLY**  
 Rotten fruit is a tasty treat for butterflies



**QUEEN BUMBLE BEE**  
 Ivy provides food for our pollinators during the autumn months



**BUFF TAILED BUMBLE BEE**  
 Collecting pollen from spring flowers



## HOW TO ATTRACT POLLINATORS

Plant native spring bulbs around your tree, including bluebells, snowdrops or crocus

Plant and encourage wildflowers

Don't be too tidy! Leave deadwood and leaves on the ground as habitat for wildlife



## CARING FOR YOUR YOUNG FRUIT TREE

### WEED

Remove weeds and grass from directly underneath your tree

### MULCH

Adding a layer of mulch will stop weeds from growing and keep your tree moist during dry weather

### STAKE YOUNG TREES

Young fruit trees need staking for support

### TREE GUARDS

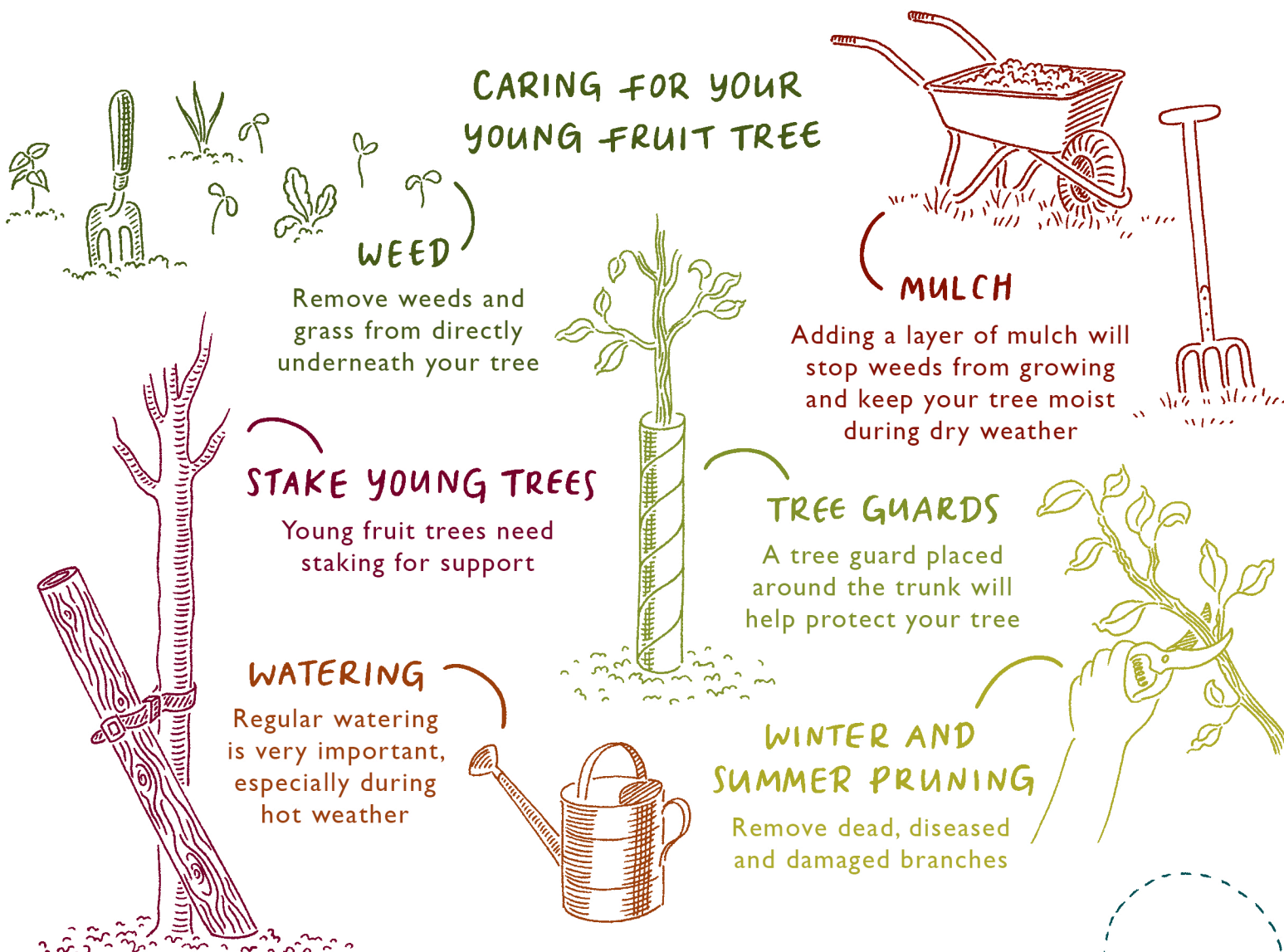
A tree guard placed around the trunk will help protect your tree

### WATERING

Regular watering is very important, especially during hot weather

### WINTER AND SUMMER PRUNING

Remove dead, diseased and damaged branches



## POLLINATOR SPOTTER

Can you spot any pollinators? Use the reverse side of this leaflet to identify different pollinator species on your fruit tree. Keep a record of your sightings using the checklist below:

### POLLINATOR SPECIES

### TICK

- RED MASON BEE
- MARMALADE HOVERFLY
- NOBLE CHAFER BEETLE
- COMMON LADYBIRD
- MISTLETOE MARBLE MOTH
- QUEEN BUMBLE BEE
- RED ADMIRAL BUTTERFLY
- ORANGE TIP BUTTERFLY
- BUFF TAILED BUMBLE BEE



Visit [www.theorchardproject.co.uk](http://www.theorchardproject.co.uk) for more information

## Forest of Avon

For more information about our work, please visit [www.forestofavontrust.org](http://www.forestofavontrust.org)

Email: [info@forestofavontrust.org](mailto:info@forestofavontrust.org)  
 Telephone: 0117 963 3383

